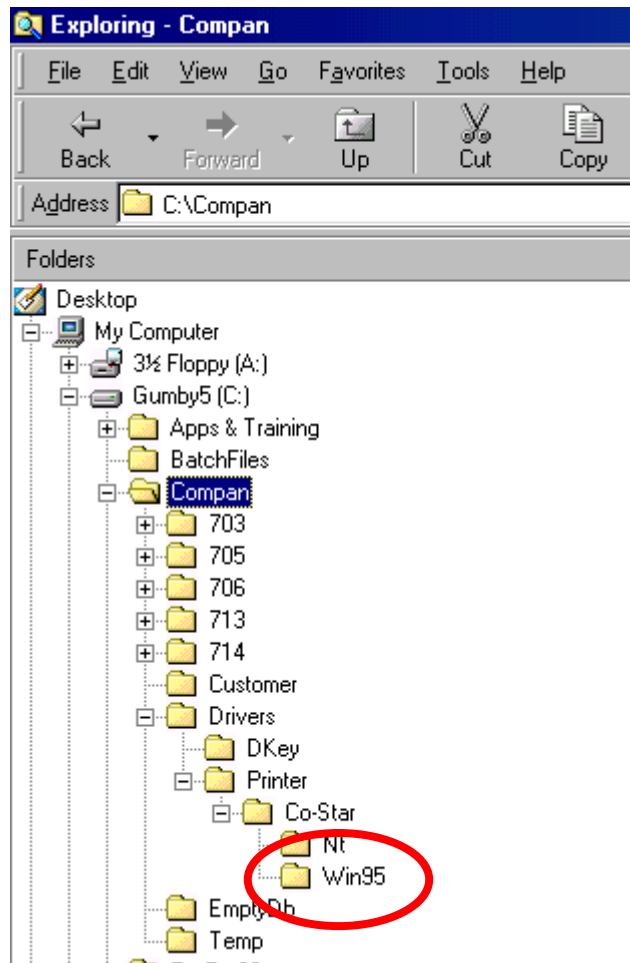


Installing your MatchRite LabelRite EL with the Serial to Parallel Converter

The LabelRite EL (hereafter called the printer) is normally installed as a serial device. So too are the spectrophotometers used with the Companion software. For some customers this can present a problem as many of today's smaller footprint PC's have only a single serial communications port. Happily the CoStar people have a fairly straightforward solution for us – the serial to parallel converter¹. The comments and screen grabs that follow should enable the install and setup for our customers.

Before beginning, ensure that you can locate the provided print drivers! By default these files are stored as shown:



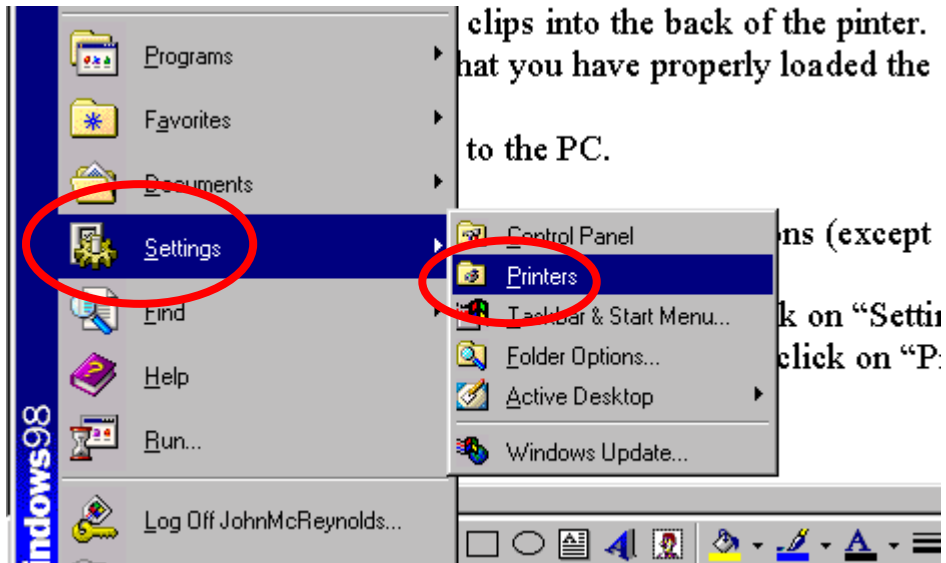
¹ Not part of a typical sales order.

On the preceding page, you see a screen grab that details the folder structure used by the Companion software. You will need to navigate into this structure in the sections that follow.

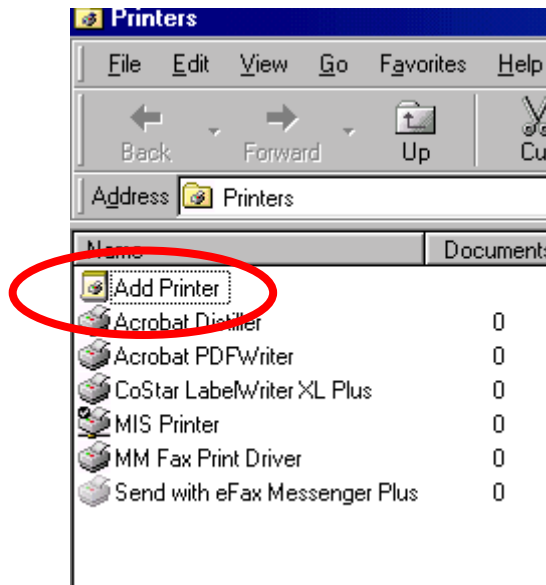
Your next step is to attach the Parallel to Serial interface cable to both your PC and to the printer. The 25-pin male end of the cable should be connected directly to the security key (which is already attached to the parallel port of the computer). The RJ-25 end of the cable clips into the back of the pinter. Once connected ensure that the printer is turned on and that you have properly loaded the thermal printing paper.

Back to the PC.

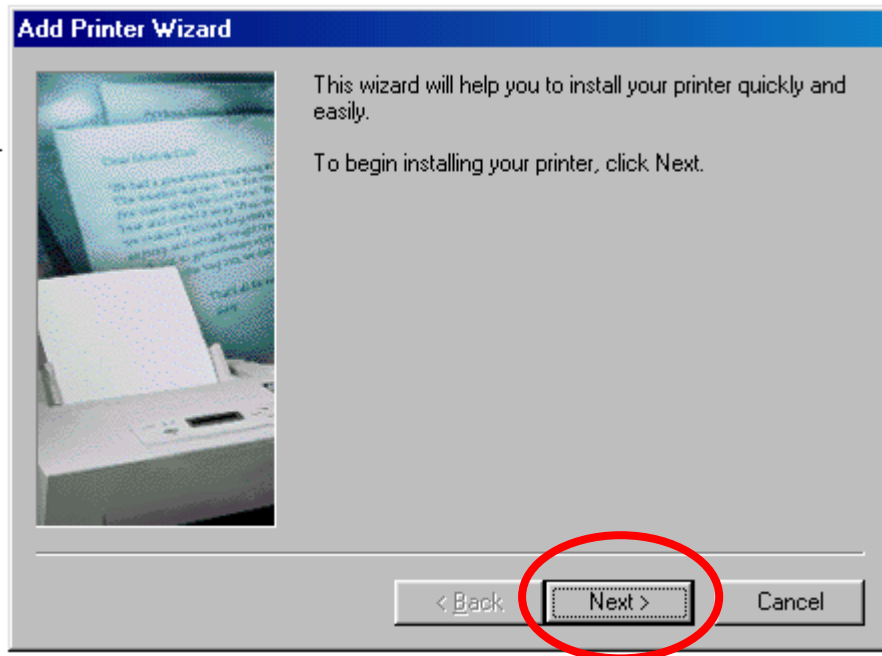
- Close all running applications (except Windows itself).
- Click on the “Start” button.
- From the “Start Menu” click on “Settings”
- From the “Settings Menu” click on “Printers”



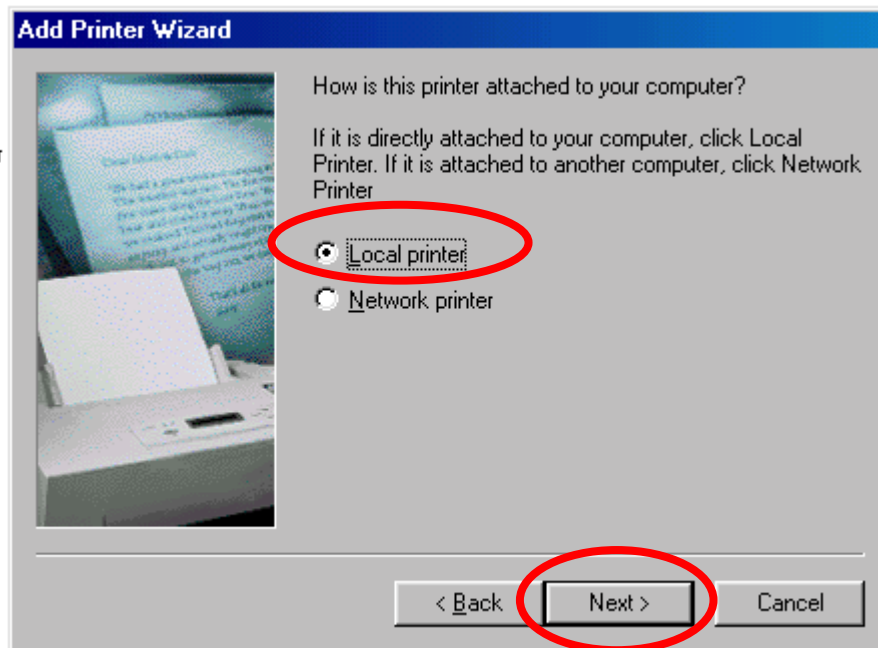
When the printer configuration screen appears, DOUBLE-click on “Add Printer”.



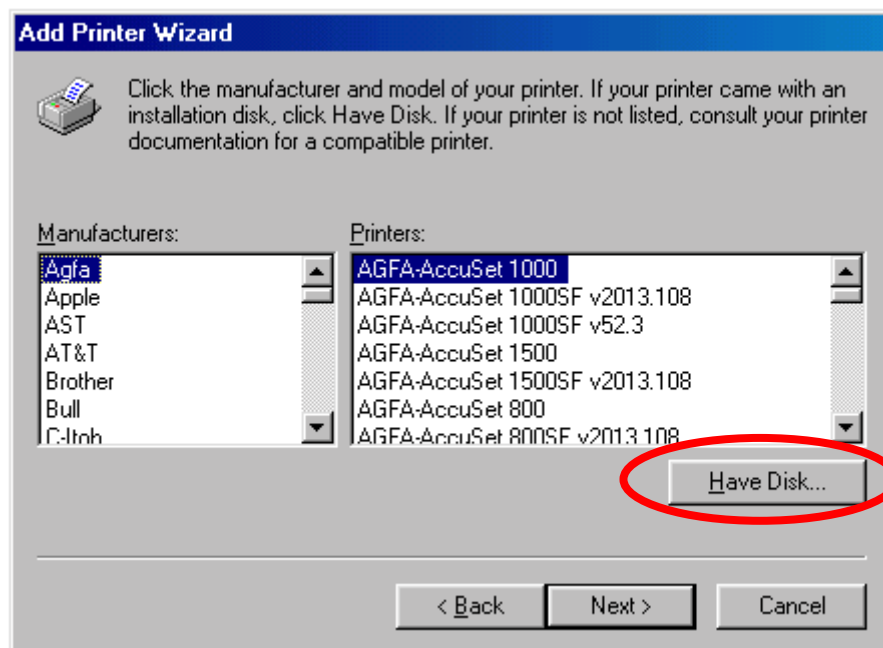
Begin the “Add Printer Wizard”... Click on “Next” to proceed.



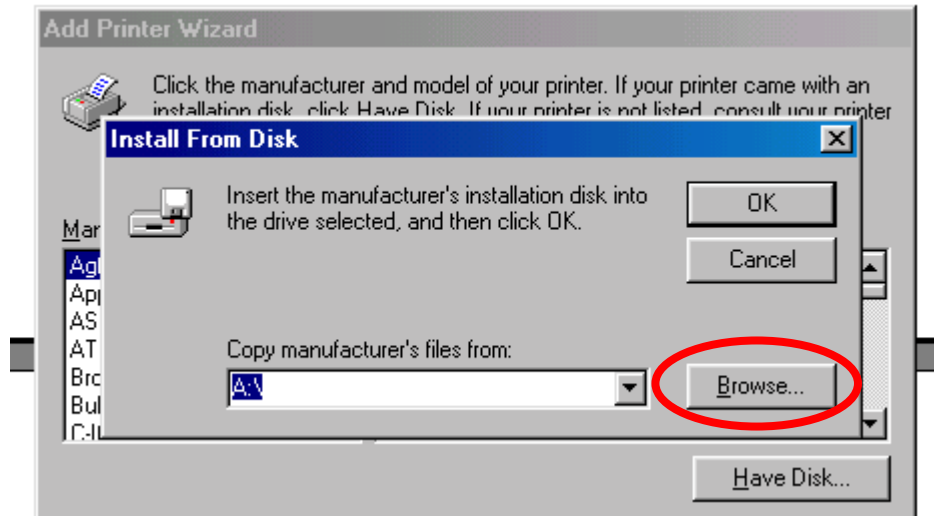
Select "Local Printer", then click "Next".



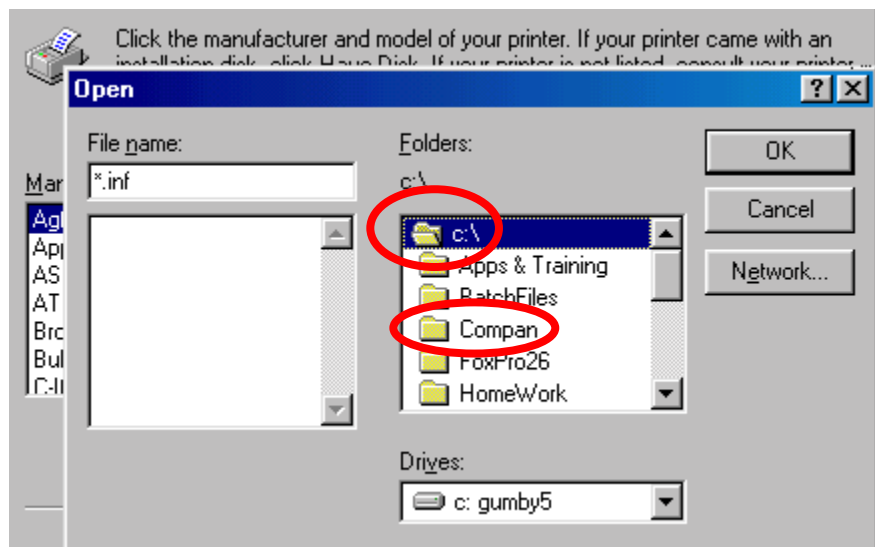
Now select "Have Disk".



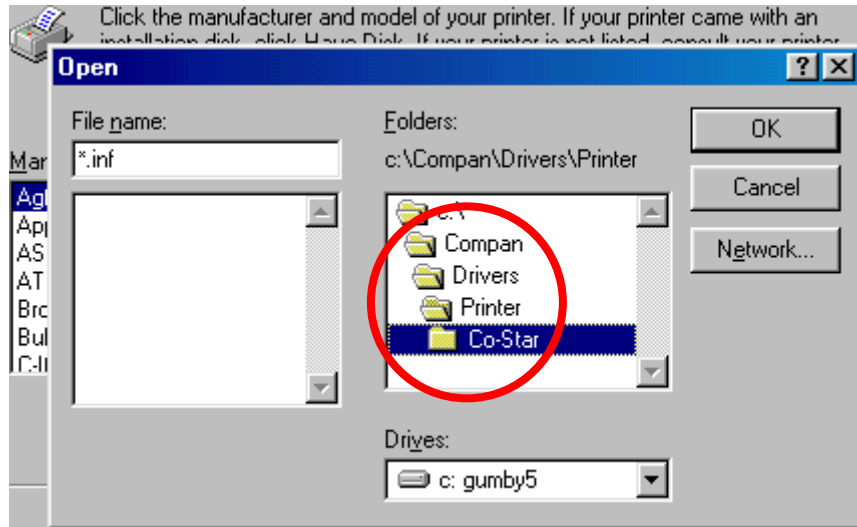
When the dialog box opens... choose the "Browse" function.



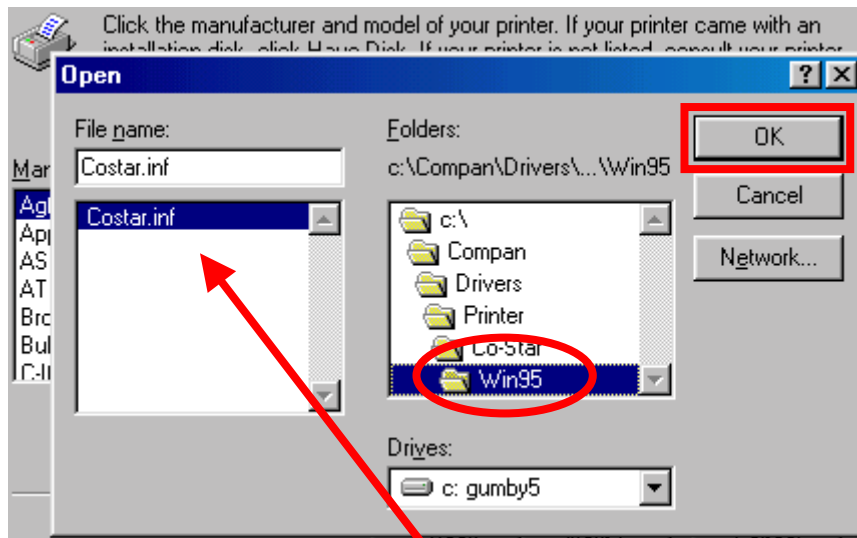
Here's where the first page comes back into play. We need to navigate to the folder that contains the printer setup files. DOUBLE-click "C:\:" then DOUBLE-click "Compan".



Follow by DOUBLE-clicking on “Drivers”, then “Printers”, then “Co-Star”. Each time you DOUBLE-click an item, you will move one level deeper into the folder structure.

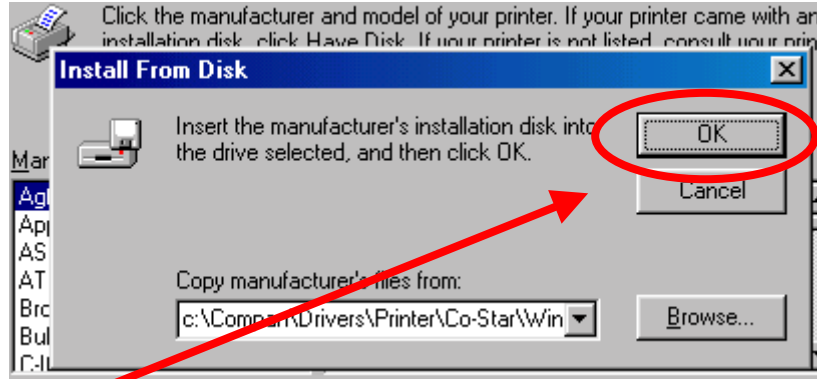


Finally DOUBLE-click on the “Win95” folder. Yes I know we are running WIN98. This is the correct folder for both operating systems!

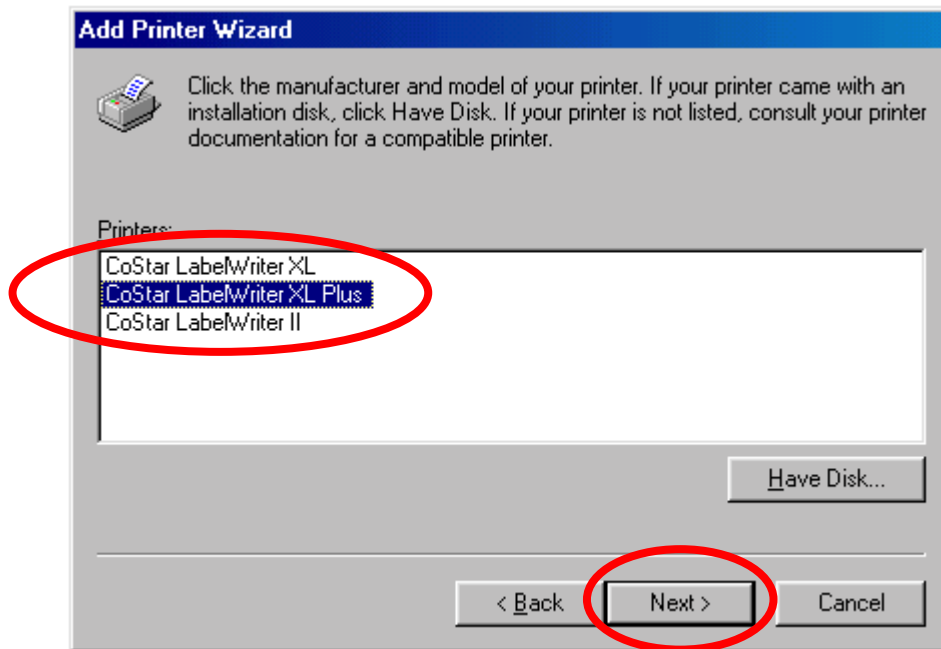


As soon as this folder opens, you will see “Costar.inf” in the lefthand panel. Highlight this item and then click “OK”.

The top level dialog box will close leaving the following:

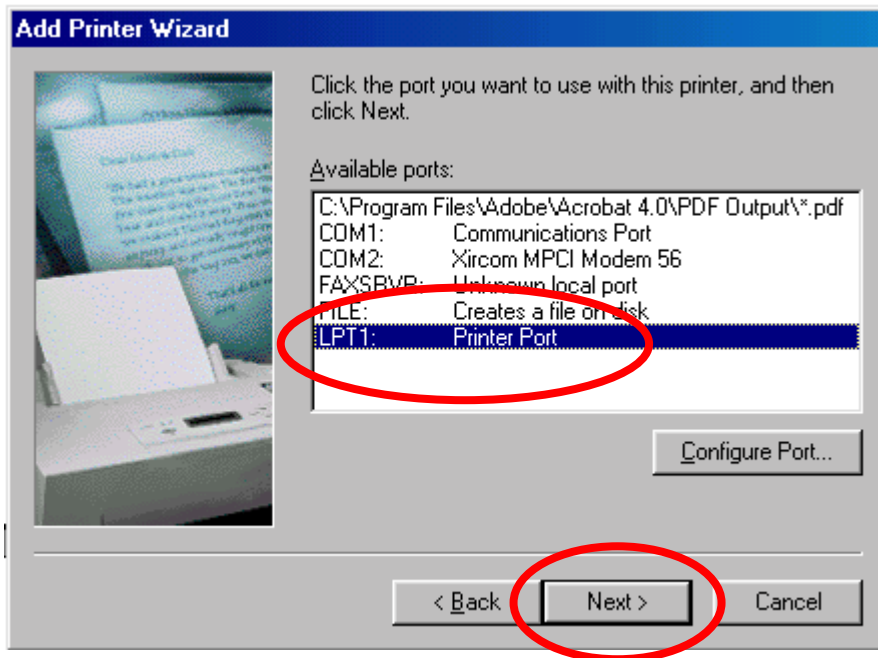


Click on “OK” a second time to continue. When the following screen appears, select (click once on the item) the “CoStar LabelWriter XL Plus”. Finally click “Next”.

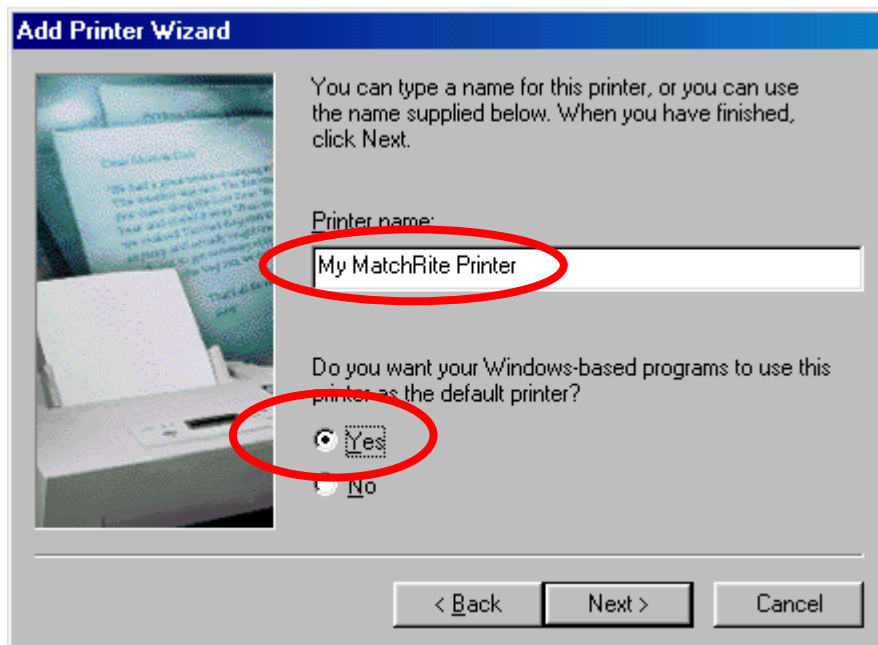


Admittedly your printer is NOT the XL Plus. It's OK though! The same printer driver is also needed for the LabelRite EL!

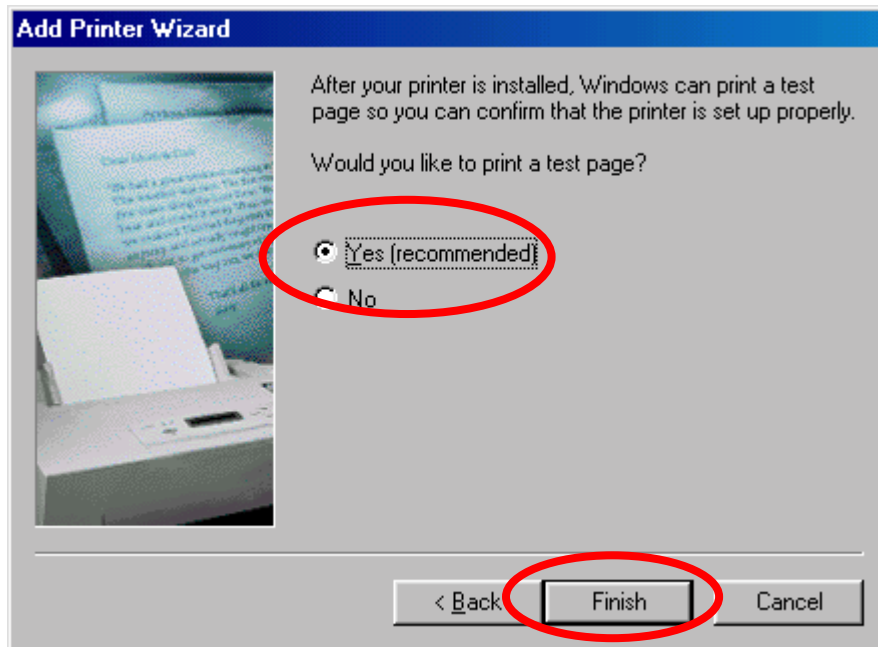
Because we are using a parallel cable (Parallel to Serial Converter), we must select the “LPT1” option from the displayed list! Click “Next” when you are ready to move on.



If you wish, you may give your printer a friendly name. In any event, you should make it your DEFAULT printing device!

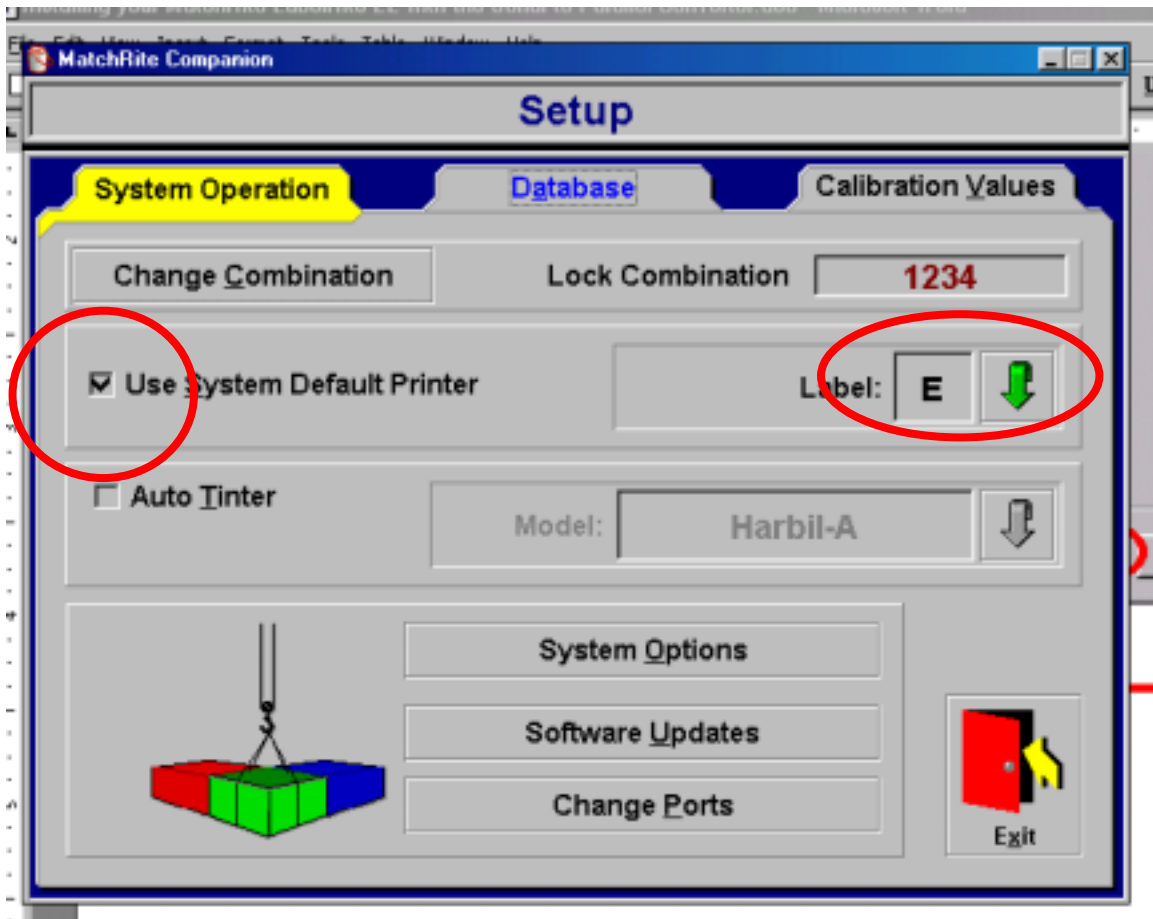


Finally, at your discretion, print a test page to make sure the printer is functioning! Oh yeah, then click “Finish”.



Done with part one.

The last thing that needs to be done is to ensure that Companion is set properly. You do this in housekeeping. Ensure that you have selected the appropriate printer label size. Also ensure that the Companion uses the “System Default Printer”.



MatchRite Printer Labels			
C	D	E	F
2-5/8" x 3-1/8"	2-7/8" Round	2-7/8" x 2-3/4"	3-1/2" x 1-1/8"
Citizen	Panasonic	N/A	CoStar XL
Citizen	Panasonic	CoStar XL Plus Dymo EL60	CoStar XL CoStar XL Plus

With any luck at all, you are set to go.