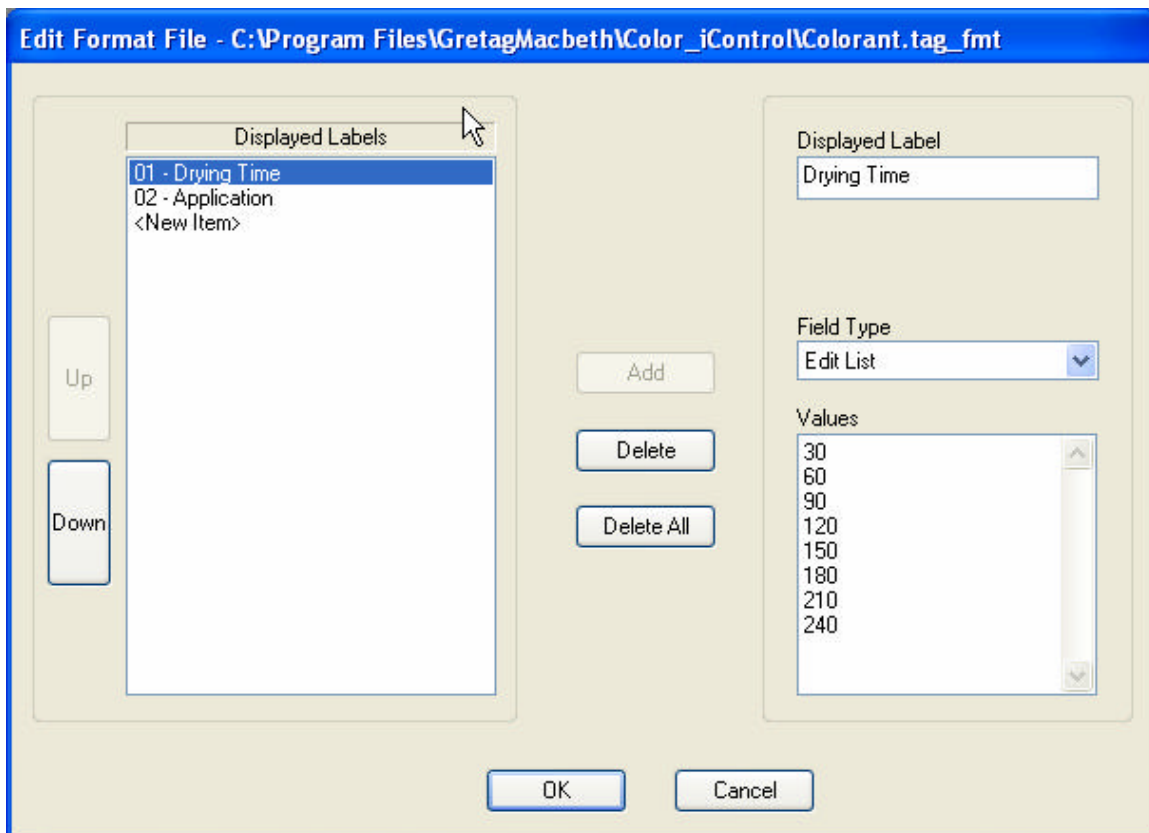




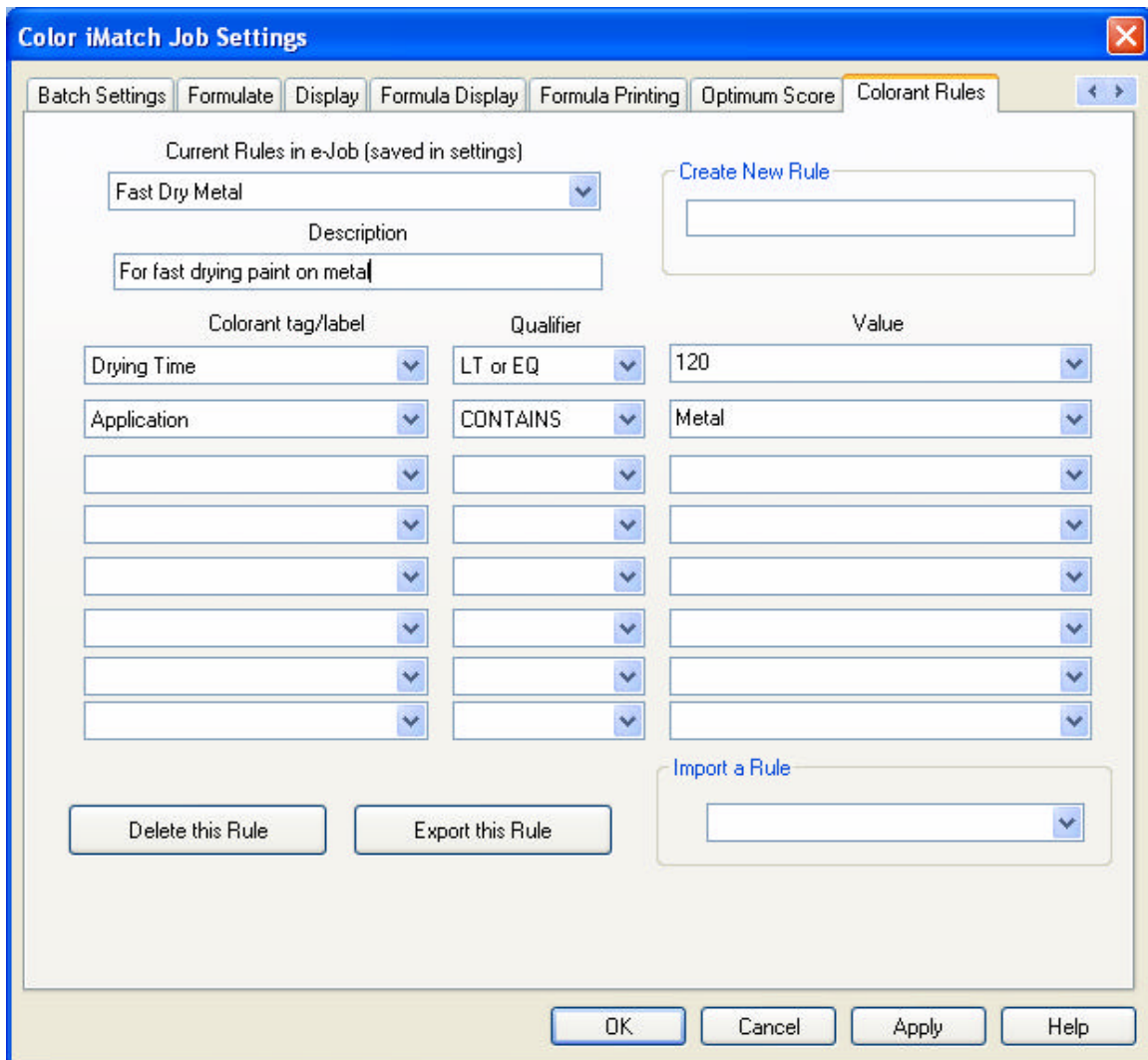
COLORANT RULES IN COLOR iMATCH

Colorant Rules in formulation is used to select a set of colorants out of all the current colorants available to be used for formulation. It is like creating a group of colorants on the fly. For example if you need to match a shade with paint but need it to dry quickly they you can specify a rule for drying time to be equal to or shorter that 30 minutes. When you choose this rule in formulation it will look through the colorants available and select only those that you have set to have drying times of 30 minutes or less. To use Colorant Rules you can define up to 30 tags / information you want to track or group by, enter the actual information into each colorant, then create a rule for use in formulation.

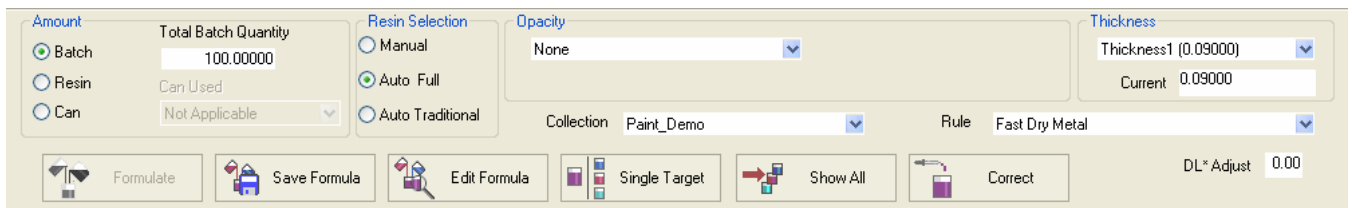
First you will need to setup Colorant Tags. This is a one time setup and will be used for all colorants in the system. To setup colorant tags you will enter Color iMatch and close all e-Jobs. Then go to the Settings menu and choose Setup Colorant Tagging.



To create tags, click on <New Item> in the left box and then enter a name for the label under Displayed Label on the right. Then choose the type of entry you would like for this type of tag. Field Types are Text Edit [free entry], Drop List [will be presented with a drop down list and much choose from the list], Edit List [will be presented with a drop down list but can type in data], MultiSelect [will be presented with a drop down list and can select more than on item]. For the above example there are only two tags named Drying Time with an edit list and Application with a



Then in formulation you will have a drop down box on the right side containing all the colorant rules you have created. When you select one of the rules such as Fast Dry Metal then only the colorants meeting those requirements will be used for formulation. So out of the 30 colorants only 12 meet the fast dry metal rule and will be used for formulation.



When using a rule you will not be able to select or deselect individually colorants. You will need to select no rule to manually select colorants.